

POLLUTION INCIDENT RESPONSE MANAGEMENT PLAN (PIRMP)



10 Canterbury Road,
Kembla Grange, NSW, 2526

Telephone:
1300 440 072

Version 3 October 2018

Contents

| | |
|--|---|
| INTRODUCTION | 0 |
| Definitions | 1 |
| Contact Details | 1 |
| Training Requirements | 1 |
| POLLUTION INCIDENT RESPONSE MANAGEMENT PLAN | 3 |
| Possible Pollution Incidents | 3 |
| Flora and Fauna that could be affected..... | 3 |
| Inventory of Pollutants | 3 |
| Pollution Incident Assessment | 4 |
| Pollution Incident Management Process | 5 |
| EMERGENCY EQUIPMENT / INFORMATION | 6 |
| First Aid personnel | 6 |
| First Aid equipment..... | 6 |
| Emergency eye wash | 6 |
| Firefighting equipment | 6 |
| Emergency Exits..... | 6 |
| Emergency Evacuation Assembly Area | 6 |
| Pollution Incident Safety Equipment..... | 7 |
| Safety Data Sheets (SDS)..... | 7 |
| PROTOCOL FOR NOTIFICATION OF INCIDENTS..... | 7 |
| Authorities to be notified..... | 7 |
| Communicating with neighbours and local community..... | 8 |
| APPENDIX 1 – SITE DRAINAGE MAP | 9 |

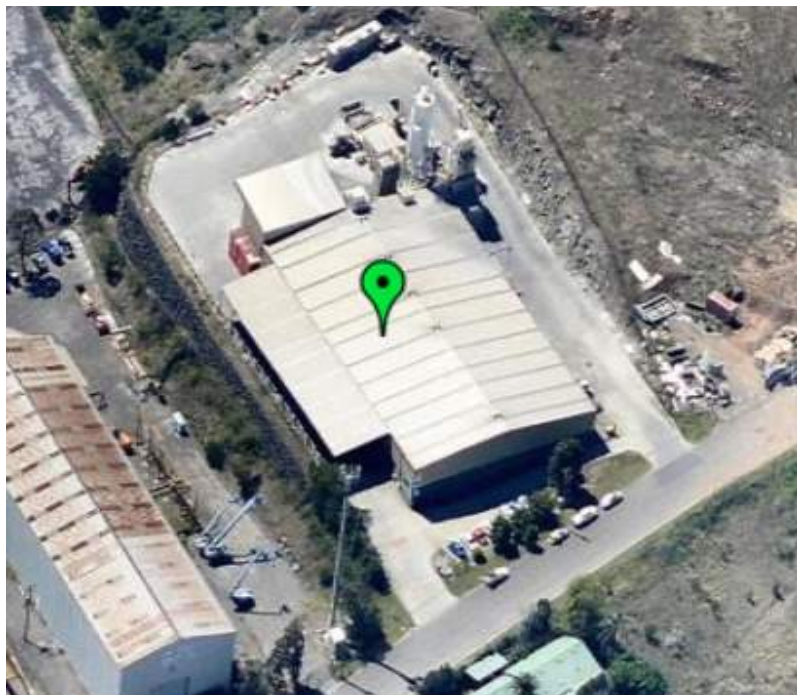
INTRODUCTION

Building Products Supplies (BPS) Kembla Grange depot operates under an EPA license, as such this *plan* is created, maintained and tested in compliance with Part 5.7A of the POEO Act 1997 and Part 3A of the Protection of the Environment Operations (General) Regulation 2009 (POEO General Regulation). This plan shall be reviewed annually.

EPA License Number: 20747. A copy of the license can be found in Appendix 1

License Holder: Building Products Supplies

Site Location: 10 Canterbury Road, Kembla Grange - refer aerial shots below.



This *plan* has been prepared for use by Building Products Supplies. Environmental issues arising out of BPS operations will be covered by this *plan*. This *plan* shall be tested annually, by PIC or delegate.

Definitions

Pollution incident means an incident or set of circumstances during or as a consequence of which there is or is likely to be a leak, spill or other escape or deposit of a substance, as a result of which pollution has occurred, is occurring or is likely to occur.

A *pollution incident* has reporting requirements if there is risk of '**material harm to the environment**' which is defined in section 147 of the Protection of the Environment Operations Act (POEO Act) as:

- a) harm to the environment is material if:
 - it involves actual or potential harm to the health or safety of human beings or to ecosystems that is not trivial, or
 - it results in actual or potential loss of property damage of an amount, or amounts in aggregate, exceeding \$10,000
- b) loss includes the reasonable costs and expenses that would be incurred in taking all reasonable and practicable measures to prevent, mitigate or make good harm to the environment.

Plan means a *pollution incident* response management plan required to be prepared under Part 5.7A of the Act.

Contact Details

BPS Kembla Grange site has the capacity and council approval to run 24 hours a day, 7 days a week.

All *pollution incidents* are to be reported to BPS through the following number

1300 440 072

This number is answered by the Allocations team at the Glendenning site who are available 24 hours a day, 7 days a week. The Allocations team will notify the Pollution Incident Controller or their deputy.

Alternative contacts for the site are as follows:

- Nadine Livett (Pollution Incident Chief - PIC) – 0402 836 784
- Jared Taylor (Deputy PIC) - 0456 028 208.

Training Requirements

The PIC and Deputy PIC shall participate in the annual review of this plan.

Employees shall receive annual training in the appropriate response to an incident that could cause actual or potential material harm to the environment including.

- The contents of, and how to use the spill kit
- The procedure to be followed after a *pollution incident* and who should be contacted during and after the incident
- The procedure on how to contain a product spill

This can be delivered through a toolbox or safety committee meeting.

Toolbox meeting records are stored on the IRIS system.

Safety committee meeting records are stored in the Filing Cabinet in IRIS.

Training records are stored on the IRIS system.

Drill Exercise

A drill exercise shall be conducted annually to test the effectiveness of this plan and serve as an annual refresher in the appropriate response to an incident that could cause actual or potential material harm to the environment.

The exercise can be desktop or practical and shall pick one of the identified risks and follow the appropriate response, ensuring that the requisite knowledge and provisions are in place to facilitate the response.

The annual test shall be recorded using the Drill Evaluation Report Form through the IRIS system.

The last drill exercise was conducted on 4th October 2018 by Nadine Livett and Jesse Brown.

POLLUTION INCIDENT RESPONSE MANAGEMENT PLAN

Possible Pollution Incidents

The following have been identified as possible *pollution incidents* at the BPS site:

- Truck diesel tank rupture due to collision
- Diesel leak from truck
- Diesel leak from diesel tank held on site
- Cementitious product into storm water drains
- Failure of silo top
- Dust collector malfunction
- Loading/Unloading issues causing cementitious product release into air

Flora and Fauna that could be affected

There is no known flora and fauna on site that could be affected by the operations.

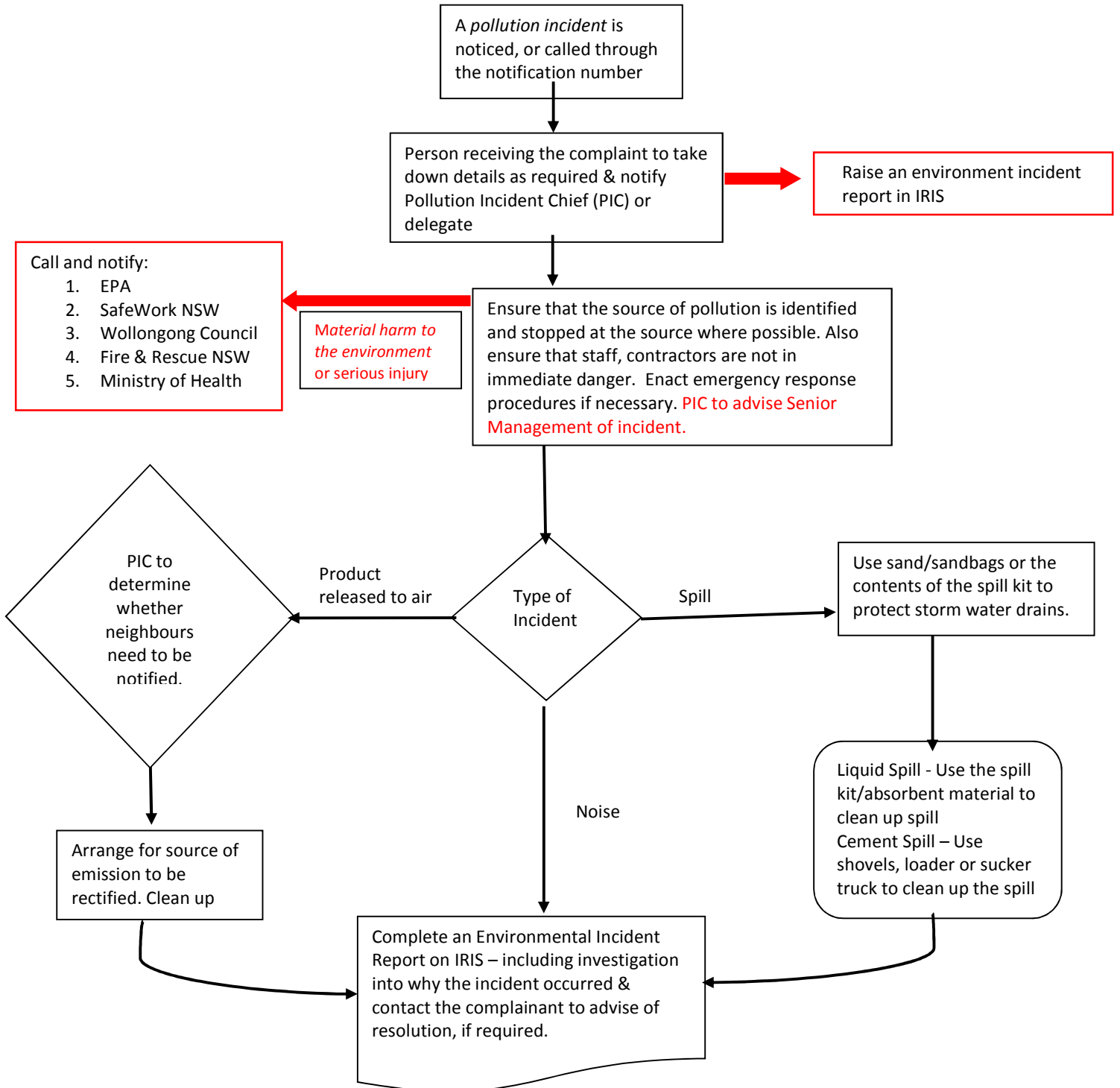
Inventory of Pollutants

| Potential pollutant kept on site | Maximum quantity kept on site |
|--|-------------------------------|
| Diesel in storage tank | 1000L |
| Diesel in the truck | 200L per truck |
| Gas Cylinders | 10 cylinders @ 15kgs each |
| Cement (including slag and fly ash) Bulk and Bag | 1000T |

Pollution Incident Assessment

| Details | Main hazards identified | Likelihood | Pre-emptive actions to be taken |
|--|--|------------|--|
| Scenario 1: Truck diesel tank rupture due to collision | Contamination of stormwater | Unlikely | Established traffic management plan on site Induction for all contractors on site (including truck drivers) Spillage booms and sand exist on site to prevent diesel entering waterway. |
| Scenario 2: Diesel leak from truck | *Contamination of stormwater *Slip hazard | Unlikely | Spill kit available on site |
| Scenario 3: Diesel leak from diesel tank held on site | Contamination of stormwater Slip hazard | Possible | Battery operated pump with safety stop mechanism to prevent leaking Tank is stored in a sheltered concrete bund |
| Scenario 4: Cementitious product into storm water drains/tank | Contamination of stormwater | Possible | Drain protection filters Drain protection filters to be regularly monitored and cleaned as required. |
| Scenario 1: Failure of silo top | *Release of cementitious product into the atmosphere *Respiratory or eye irritation | Unlikely | Overpressure vents High level alarms High level alarm test |
| Scenario 2: Dust collector malfunction | *Release of cementitious product into the atmosphere *Respiratory or eye irritation | Possible | Visual observation -Daily check, weekly report |
| Scenario 3: Loading/Unloading issues causing cementitious product release into air | *Release of cementitious product into the atmosphere *Respiratory or eye irritation | Possible | All truck drivers to be inducted to site including loading and unloading procedures. |

Pollution Incident Management Process



EMERGENCY EQUIPMENT / INFORMATION

First Aid personnel

There are a number of first aid personnel on site at any given time. If you have an injury that requires first aid attention, contact the site manager or supervisor for assistance. They can arrange appropriate treatment.

First Aid equipment

There is a first-aid kit in a number of locations around site. The first aid kit is marked with a green sign with a white cross on it.

Emergency eye wash

There are emergency eye-washing units located strategically around site.

Firefighting equipment

Firefighting equipment is located around the site.

In an emergency, fight a fire only if you are trained in firefighting techniques and if it is safe to do so.

Emergency Exits

There are emergency exits in all buildings on site. These are identified by the green and white "EXIT" signs above the door. Be aware of the nearest emergency exit to your work area. Always keep emergency exits clear.

Emergency Evacuation Assembly Area



Emergency Evacuation
Assembly Area

Pollution Incident Safety Equipment

Spill containment equipment is located near the diesel tank on site.

Safety Data Sheets (SDS)

SDS for all hazardous chemicals kept on site can be found in the BPS office.

PROTOCOL FOR NOTIFICATION OF INCIDENTS

The number mentioned above is manned 24 hours. The person manning the telephone will try and capture as much information as possible from the complainant, including:

- The date and time of the complaint
- The method by which the complaint was made
- Any personal details of the complainant which were provided by the complainant or, if no such details were provided, a note to that effect
- The nature of the complaint

All this information can be captured in an Environment Incident Report in IRIS.

The person receiving the complaint MUST make the Pollution Incident Chief aware of the complaint immediately.

BPS Kembla Grange Site manager, Nadine Livett has been designated the Pollution Incident Chief (PIC). She is responsible for managing the *pollution incidents*.

If the *pollution incident* does or is likely to be a breach of EPA License requirements, or *material harm to the environment* is caused, Senior Management Team must be advised immediately. The relevant member of the Senior Management Team will either notify the relevant authorities in the event of a *pollution incident*, or instruct the PIC to do so.

Authorities to be notified

The following authorities shall be notified:

| Authority | Contact Number |
|--------------------|-------------------------------------|
| Fire & Rescue NSW* | 000 |
| EPA | 131 555 |
| SafeWork NSW | 13 10 50 |
| Wollongong Council | 42277111 – After hours 1300 557 980 |
| Ministry of Health | 93919000 |

Communicating with neighbours and local community

In the event of a *pollution incident*, BPS' neighbours are to be notified if the incident is likely to have an impact on their property or operation.

The most likely scenario affecting neighbours would be air emissions.

Below is a list of the closest neighbours to BPS.

| Neighbouring company | Address | Contact Number |
|---------------------------------|--------------------------------------|-----------------------|
| Bohler Uddeholm Australia | 281 Princes Hwy Unanderra | (02) 4272 6544 |
| Wollongong City Security | Unit 7 295 Princess Hwy Unanderra | (02) 4226 1966 |
| Onsite Rental Group | 281 Princes Hwy Unanderra | (02) 4257 2534 |
| J&L Borgo Peters Ice Cream | 2/289-295 Princes Hwy Unanderra | (02) 4272 8518 |
| Unanderra Auto Care | 283 Princes Hwy Unanderra | (02) 4272 7772 |
| Always Rigging and Lifting Gear | 279 Princes Hwy Unanderra | (02) 4272 8000 |

All notification is to be done by PIC via the above noted telephone numbers.

Dependant on the type of incident, wind conditions, PIC will determine which neighbours need to be contacted. PIC will provide them with specific information to minimise the risk of harm and keep them updated on progress.

