

# POLLUTION INCIDENT RESPONSE MANAGEMENT PLAN (PIRMP)



Gate 7, Foreshore Road,  
Port Kembla, NSW, 2505

Telephone:  
**1300 440 072**

Version 2 October 2018

## Contents

INTRODUCTION .....	0
Definitions .....	1
Contact Details .....	1
Training Requirements .....	1
POLLUTION INCIDENT RESPONSE MANAGEMENT PLAN .....	3
Possible Pollution Incidents .....	3
Flora and Fauna that could be affected.....	3
Inventory of Pollutants .....	3
Pollution Incident Assessment .....	4
Pollution Incident Management Process .....	5
EMERGENCY EQUIPMENT / INFORMATION .....	6
First Aid personnel .....	6
First Aid equipment.....	6
Emergency eye wash .....	6
Firefighting equipment .....	6
Emergency Exits.....	6
Emergency Evacuation Area .....	6
Safety Data Sheets (SDS).....	7
PROTOCOL FOR NOTIFICATION OF INCIDENTS.....	8
Authorities to be notified.....	8
Communicating with neighbours and local community.....	9
APPENDIX 1 – SITE DRAINAGE MAP .....	10

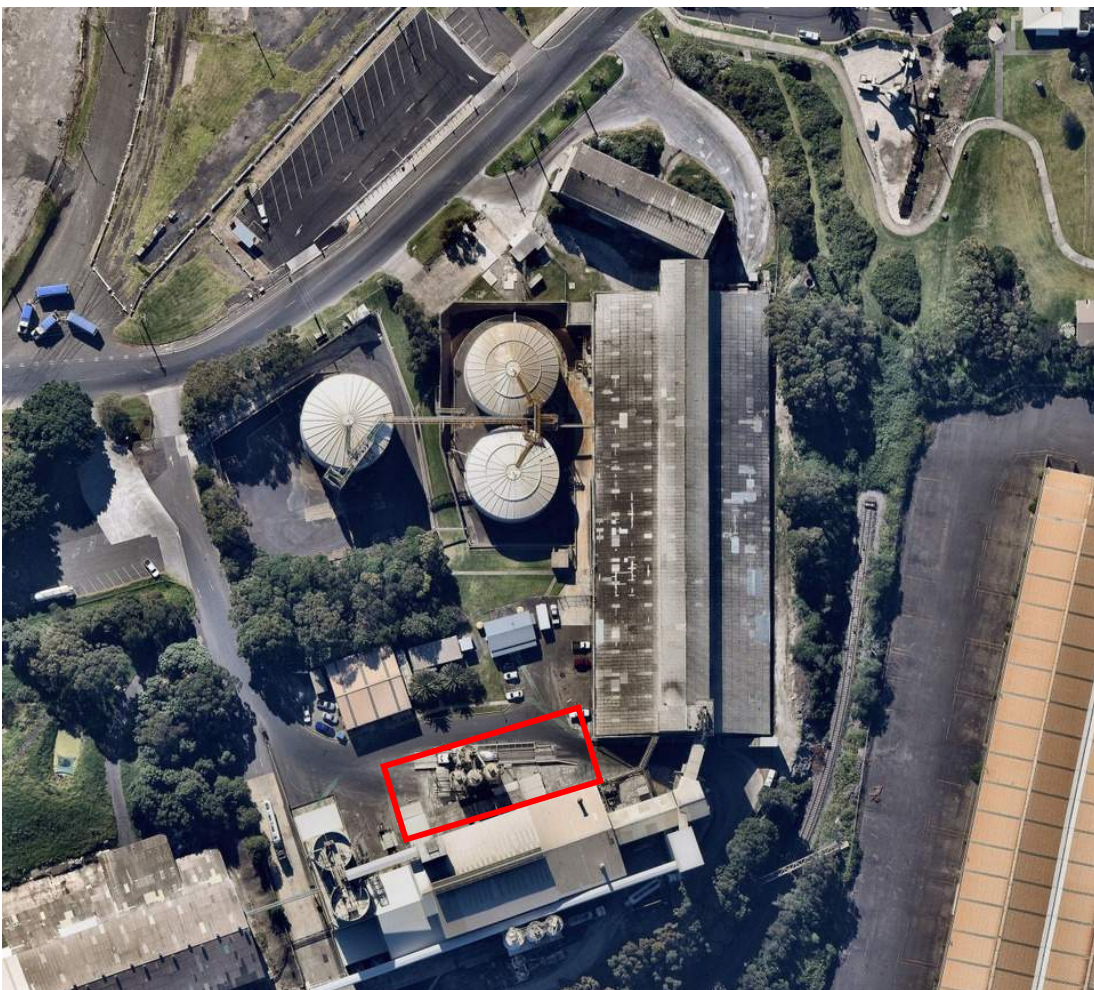
## INTRODUCTION

Independent Cement and Lime's (ICL) Port Kembla depot operates under an EPA license, as such this *plan* is created, maintained and tested in compliance with Part 5.7A of the POEO Act 1997 and Part 3A of the Protection of the Environment Operations (General) Regulation 2009 (POEO General Regulation). This plan shall be reviewed annually.

**EPA License Number:** 20730. A copy of the license can be found in Appendix 1

**License Holder:** Independent Cement and Lime

**Site Location:** Gate 7 Foreshore Road, Port Kembla. Located within the Morgan Cement International (MCI) Site, refer aerial shots below.



This *plan* has been prepared for use by Independent Cement and Lime (ICL). Environmental issues arising out of ICL operations will be covered by this *plan*. This *plan* shall be tested annually, by PIC or delegate. The testing may be done in conjunction with MCI.

As can be seen above, the ICL facility is surrounded by Morgan Cement International (MCI), another EPA licensed facility. In the event of an MCI event, MCI's Environmental

Management Manual can be found at the following link:

[http://www.adelaidebrighton.com.au/assets/download/MCI Environment Management Manual.pdf](http://www.adelaidebrighton.com.au/assets/download/MCI_Environment_Management_Manual.pdf)

## **Definitions**

**Pollution incident** means an incident or set of circumstances during or as a consequence of which there is or is likely to be a leak, spill or other escape or deposit of a substance, as a result of which pollution has occurred, is occurring or is likely to occur.

A *pollution incident* has reporting requirements if there is risk of '**material harm to the environment**' which is defined in section 147 of the Protection of the Environment Operations Act (POEO Act) as:

- a) harm to the environment is material if:
  - it involves actual or potential harm to the health or safety of human beings or to ecosystems that is not trivial, or
  - it results in actual or potential loss of property damage of an amount, or amounts in aggregate, exceeding \$10,000
- b) loss includes the reasonable costs and expenses that would be incurred in taking all reasonable and practicable measures to prevent, mitigate or make good harm to the environment.

**Plan** means a *pollution incident* response management plan required to be prepared under Part 5.7A of the Act.

## **Contact Details**

ICL's Port Kembla site is an unmanned terminal.

All *pollution incidents* are to be reported to ICL through the following number

**1300 440 072**

This number is answered by the Allocations team at the Glendenning site who are available 24 hours a day, 7 days a week. The Allocations team will notify the Pollution Incident Controller or their deputy.

As an EPA licence condition, this number is displayed on the perimeter fencing for environmental incident notifications by members of the public.

Alternative contacts for the site are as follows:

- Dave Schultze (Pollution Incident Chief PIC) - 0439 117 124.
- Jared Taylor (Deputy PIC) - 0456 028 208.

## **Training Requirements**

The PIC and Deputy PIC shall participate in the annual review of this plan.

Drivers attending the site shall be made aware of the appropriate response to an incident that could cause actual or potential material harm to the environment including.

- The contents of and how to use the spill kit
- The procedure to be followed after a *pollution incident* and who should be contacted during and after the incident
- The procedure on how to contain a product spill

Contractor induction records are stored in the 'Contractor' module of the IRIS system.

### ***Drill Exercise***

A drill exercise shall be conducted annually to test the effectiveness of this plan and serve as an annual refresher in the appropriate response to an incident that could cause actual or potential material harm to the environment.

The exercise can be desktop or practical and shall pick one of the identified risks and follow the appropriate response, ensuring that the requisite knowledge and provisions are in place to facilitate the response.

The annual test shall be recorded using the Drill Evaluation Report Form through the IRIS system.

The last drill exercise was conducted on the 3rd October 2018 by Jared Taylor and Jesse Brown.

# POLLUTION INCIDENT RESPONSE MANAGEMENT PLAN

## ***Possible Pollution Incidents***

The following have been identified as possible *pollution incidents* at the ICL site:

- Truck diesel tank rupture due to collision
- Cementitious product into storm water drains
- Failure of silo top
- Dust collector malfunction
- Loading/Unloading issues causing cementitious product release into air

## ***Flora and Fauna that could be affected***

Any flora and fauna present on site would need to be dealt with in accordance with Morgan Cement EMP. Refer link below:

[http://www.adelaidebrighton.com.au/assets/download/MCI Environment Management Manual.pdf](http://www.adelaidebrighton.com.au/assets/download/MCI_Environment_Management_Manual.pdf)

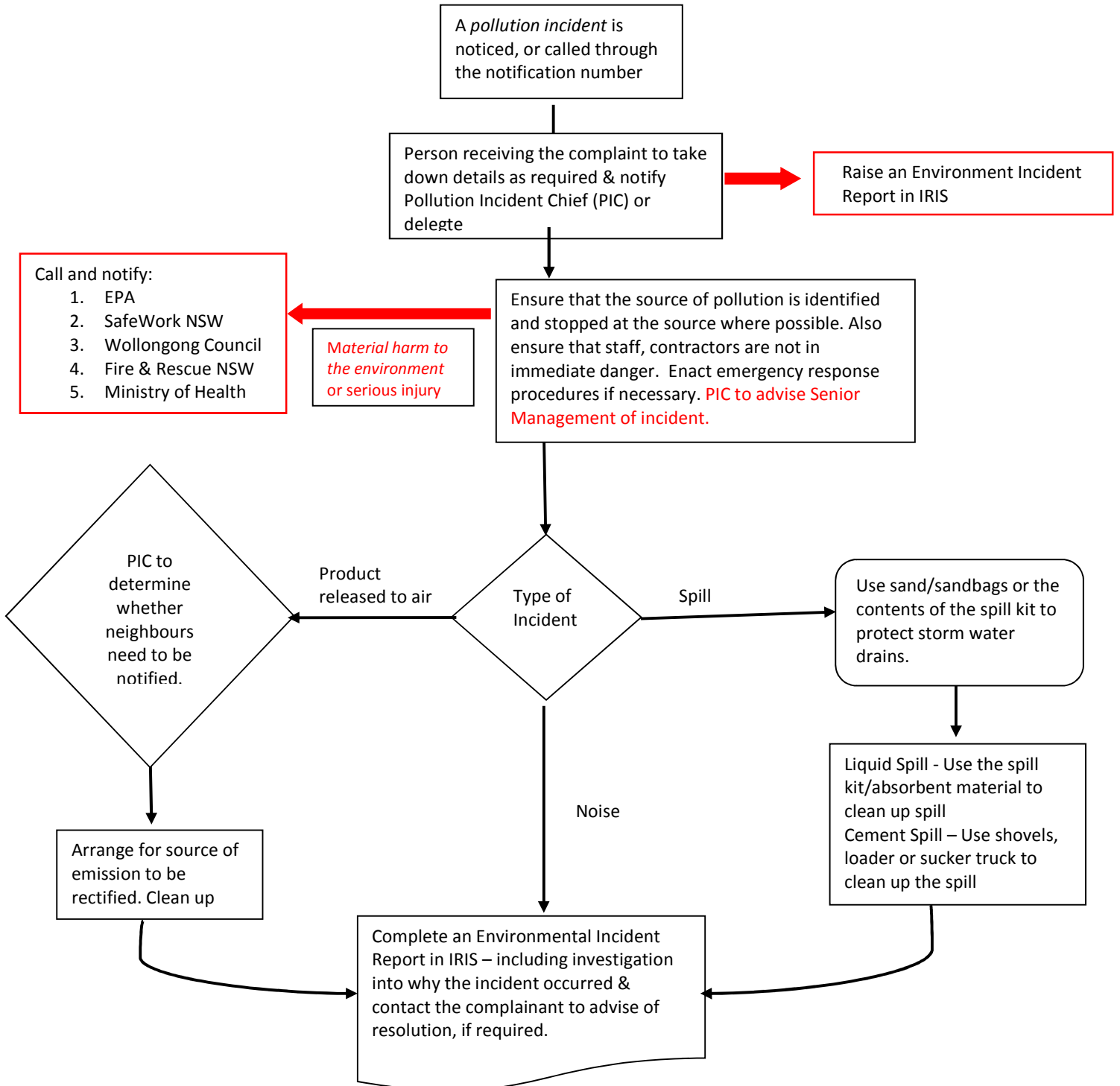
## ***Inventory of Pollutants***

Potential pollutant kept on site	Maximum quantity kept on site
Diesel in the truck	200L per truck
Cement	120 Tonnes
Flyash	200 Tonnes
Slag	85 Tonnes

## Pollution Incident Assessment

Details	Main hazards identified	Likelihood	Pre-emptive actions to be taken
<b>Scenario 1:</b> Truck diesel tank rupture due to collision	Contamination of stormwater	Unlikely	Established traffic management plan on site Induction for all contractors on site (including truck drivers). Spillage barriers exist on site to prevent diesel entering waterway.
<b>Scenario 2:</b> Diesel leak from truck	*Contamination of stormwater *Slip hazard	Unlikely	Spill kit available on site
<b>Scenario 3:</b> Cementitious product into stormwater drains	Contamination of stormwater	Possible	Drain protection filters Drain protection filters to be regularly monitored and cleaned as required.
<b>Scenario 1:</b> Failure of silo top	Release of cementitious product into the atmosphere	Possible	Overpressure vents High level alarms High level alarm test
<b>Scenario 2:</b> Dust collector malfunction	*Release of cementitious product into the atmosphere *Respiratory or eye irritation	Possible	Visual observation
<b>Scenario 3:</b> Loading/Unloading issues causing cementitious product release into air	*Release of cementitious product into the atmosphere *Respiratory or eye irritation	Possible	All truck drivers to be inducted to site including loading and unloading procedures.

## Pollution Incident Management Process





## EMERGENCY EQUIPMENT / INFORMATION

### ***First Aid personnel***

This is an unmanned site, hence there are no trained first-aid personnel on site. If you have an injury that requires first aid attention, contact the MCI workshop for assistance. They can arrange appropriate treatment.

### ***First Aid equipment***

There is a first-aid kit in each of the portable buildings on site.

### ***Emergency eye wash***

There are emergency eye-washing units located under the silos.

### ***Firefighting equipment***

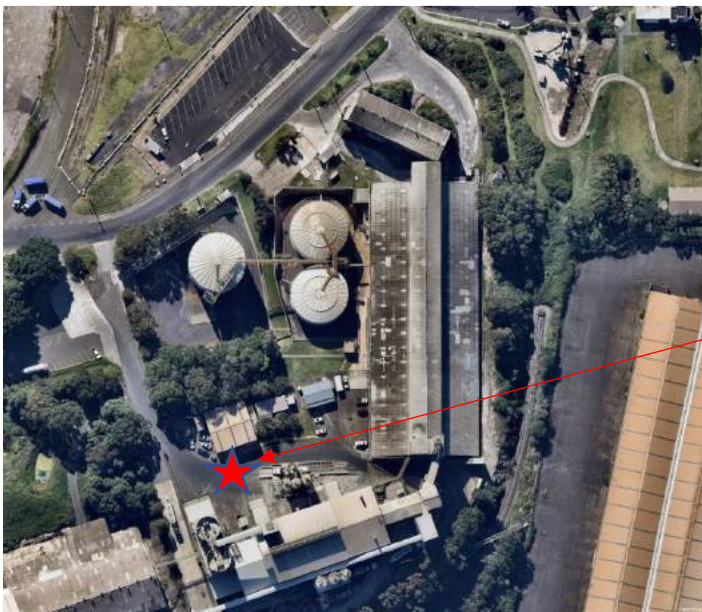
Firefighting equipment is located around the site.

In an emergency, fight a fire only if you are trained in firefighting techniques and if it is safe to do so.

### ***Emergency Exits***

There are emergency exits in all buildings on site. These are identified by the green and white "EXIT" signs above the door. Be aware of the nearest emergency exit to your work area. Always keep emergency exits clear.

### ***Emergency Evacuation Area***



Evacuation Assembly Area –  
front of MCI Workshop

## Pollution Incident Safety Equipment

Spill containment equipment is located under the silos as per the picture below.



## ***Safety Data Sheets (SDS)***

SDS for all hazardous chemicals kept on site can be found in the ICL office. As this is an unmanned site, requests for MSDS need to come via the ICL's website <http://www.independentcement.com.au/msds/> or via the PIC.

## PROTOCOL FOR NOTIFICATION OF INCIDENTS

The number mentioned above is manned 24 hours. The person manning the telephone will try and capture as much information as possible from the complainant, including:

- The date and time of the complaint
- The method by which the complaint was made
- Any personal details of the complainant which were provided by the complainant or, if no such details were provided, a note to that effect
- The nature of the complaint

All this information can be captured in an Environment Incident Report in IRIS.

**The person receiving the complaint MUST make the Pollution Incident Chief aware of the complaint immediately.**

ICL's Transport and Distribution Manager, Dave Schultze has been designated the Pollution Incident Chief (PIC). He can be contacted on 0439 117 124. Jared Taylor has been nominated as the Deputy PIC for the site, he can be contacted on 0456 028 208. The PIC and/or the Deputy PIC are responsible for managing the *pollution incidents*.

If the *pollution incident* does or is likely to be a breach of EPA License requirements, or *material harm to the environment* is caused, Senior Management Team must be advised immediately. The relevant member of the Senior Management Team will either notify the relevant authorities in the event of a *pollution incident*, or instruct the PIC to do so.

### ***Authorities to be notified***

The following authorities may need to be notified in the event of material harm to the environment:

Authority	Contact Number
Fire & Rescue NSW*	000
EPA	131 555
SafeWork NSW	13 10 50
Wollongong Council	42277111 – After hours 1300 557 980
Ministry of Health	93919000

### ***Communicating with neighbours and local community***

In the event of a *pollution incident*, ICL's neighbours are to be notified if the incident is likely to have an impact on their property or operation.

The most likely scenario affecting neighbours would be air emissions.

Below is a list of the closest neighbours to ICL.

<b>Neighbouring company</b>	<b>Address</b>	<b>Contact Number</b>
Morgan Cement International	Gate 7, Foreshore Rd. Port Kembla	Paul Bollen 0407 667 220
Port Kembla Port Corporation	91 Foreshore Rd. Port Kembla	02 4275 0100
Austral Masonry	Foreshore Rd. Port Kembla	132 742

All notification is to be done by PIC via the above noted telephone numbers.

Dependant on the type of incident, wind conditions, PIC will determine which neighbours need to be contacted. PIC will provide them with specific information to minimise the risk of harm and keep them updated on progress.

